

# 2019.7.1~



<b>Oil Pattern Distance:</b> 43 Feet	<b>Reverse Brush Drop:</b> 41 Feet	<b>Oil Per Board:</b> 40 uL
<b>Forward Oil Total:</b> 13.56 mL	<b>Reverse Oil Total:</b> 11.52 mL	<b>Volume Oil Total:</b> 25.08 mL
<b>Forward Boards Crossed:</b> 339 Boards	<b>Reverse Boards Crossed:</b> 288 Boards	<b>Total Boards Crossed:</b> 627 Boards

	Start	Stop	Loads	Speed	Crossed	Start	End	Feet	T.Oil
1	2L	2R	1	14	37	0.0	0.0	0.0	1480
2	4L	4R	1	14	33	0.0	1.9	1.9	1320
3	5L	5R	2	14	62	1.9	5.8	3.9	2480
4	7L	7R	2	14	54	5.8	9.7	3.9	2160
5	9L	9R	3	18	69	9.7	17.3	7.6	2760
6	10L	10R	3	18	63	17.3	24.9	7.6	2520
7	10L	10R	1	18	21	24.9	27.4	2.5	840
8	2L	2R	0	18	0	27.4	40.0	12.6	0
9	2L	2R	0	26	0	40.0	43.0	3.0	0

Navigation: Forward Reverse More

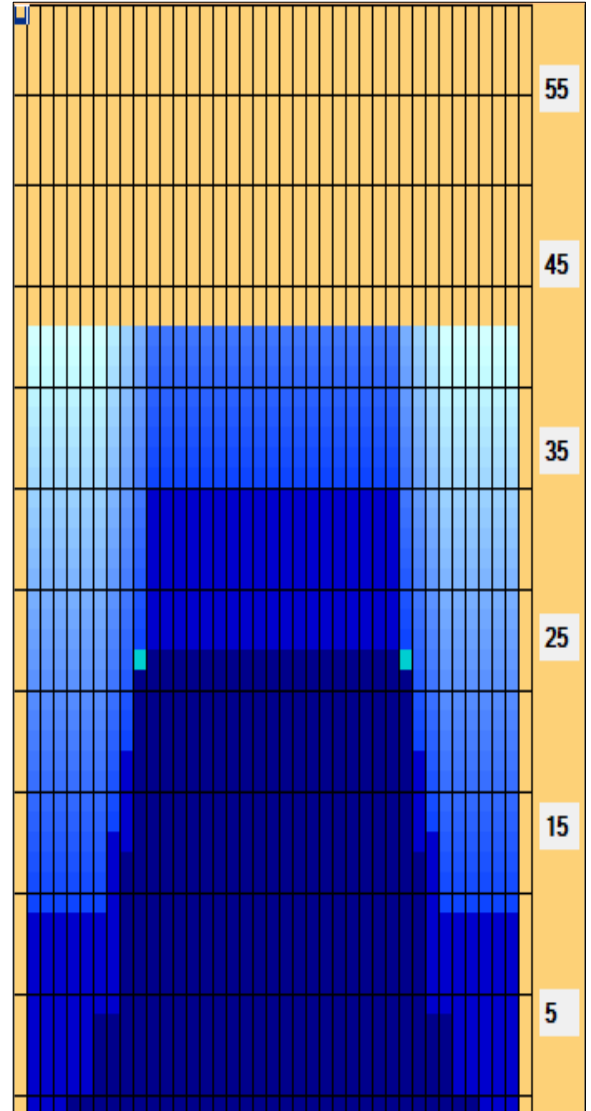
	Start	Stop	Loads	Speed	Crossed	Start	End	Feet	T.Oil
1	2L	2R	0	30	0	43.0	35.0	-8.0	0
2	11L	11R	1	22	19	35.0	31.9	-3.1	760
3	11L	11R	1	18	19	31.9	29.4	-2.5	760
4	11L	11R	2	14	38	29.4	25.5	-3.9	1520
5	10L	10R	2	14	42	25.5	21.6	-3.9	1680
6	9L	9R	2	14	46	21.6	17.7	-3.9	1840
7	8L	8R	2	14	50	17.7	13.8	-3.9	2000
8	2L	2R	2	14	74	13.8	9.9	-3.9	2960
9	2L	2R	0	14	0	9.9	0.0	-9.9	0

Navigation: Forward Reverse More

Conditioner:  
Type In or Select One

TransferType:  
Type In or Select One

- Forward
- Reverse
- Combined
- Buff



Item Description	3L-7L:18L-18R Outside Track:Middle	8L-12L:18L-18R Middle Track:Middle	13L-17L:18L-18R Inside Track:Middle	18L-18R:17R-13R Middle: Inside Track	18L-18R:12R-8R Middle:Middle Track	18L-18R:7R-3R Middle:Outside Track
Track Zone Ratio	4.63	1.3	1	1	1.3	4.63

