

# 2020.10.1~



<b>Oil Pattern Distance:</b>	<b>43 Feet</b>	<b>Reverse Brush Drop:</b>	<b>43 Feet</b>	<b>Oil Per Board:</b>	<b>40 uL</b>
<b>Forward Oil Total:</b>	<b>14.56 mL</b>	<b>Reverse Oil Total:</b>	<b>10.52 mL</b>	<b>Volume Oil Total:</b>	<b>25.08 mL</b>
<b>Forward Boards Crossed:</b>	<b>364 Boards</b>	<b>Reverse Boards Crossed:</b>	<b>263 Boards</b>	<b>Total Boards Crossed:</b>	<b>627 Boards</b>

	Start	Stop	Loads	Speed	Crossed	Start	End	Feet	T.Oil
1	2L	2R	1	10	37	0.0	0.0	0.0	1480
2	4L	4R	1	10	33	0.0	1.4	1.4	1320
3	7L	7R	3	14	81	1.4	7.3	5.9	3240
4	8L	8R	2	14	50	7.3	11.2	3.9	2000
5	8L	8R	2	18	50	11.2	16.3	5.1	2000
6	9L	9R	2	18	46	16.3	21.4	5.1	1840
7	9L	9R	2	22	46	21.4	27.6	6.2	1840
8	10L	10R	1	22	21	27.6	30.7	3.1	840
9	2L	2R	0	22	0	30.7	43.0	12.3	0

Navigation: Forward Reverse More

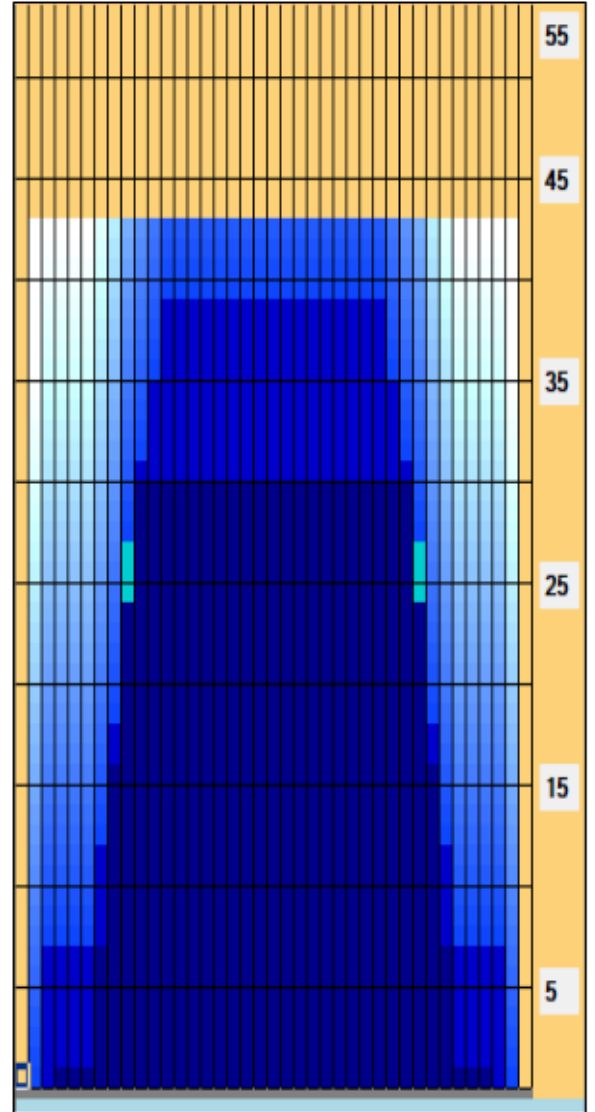
	Start	Stop	Loads	Speed	Crossed	Start	End	Feet	T.Oil
1	2L	2R	0	30	0	43.0	39.0	-4.0	0
2	12L	12R	1	30	17	39.0	34.8	-4.2	680
3	11L	11R	1	26	19	34.8	31.2	-3.6	760
4	10L	10R	2	26	42	31.2	23.9	-7.3	1680
5	9L	9R	2	22	46	23.9	17.7	-6.2	1840
6	8L	8R	2	22	50	17.7	11.5	-6.2	2000
7	7L	7R	1	18	27	11.5	9.0	-2.5	1080
8	7L	7R	1	14	27	9.0	7.1	-1.9	1080
9	3L	3R	1	14	35	7.1	5.2	-1.9	1400
10	2L	2R	0	10	0	5.2	0.0	-5.2	0

Navigation: Forward Reverse More

Conditioner:  
Type In or Select One

TransferType:  
Type In or Select One

- Forward
- Reverse
- Combined
- Buff



Item Description	3L-7L:18L-18R Outside Track:Middle	8L-12L:18L-18R Middle Track:Middle	13L-17L:18L-18R Inside Track:Middle	18L-18R:17R-13R Middle: Inside Track	18L-18R:12R-8R Middle:Middle Track	18L-18R:7R-3R Middle:Outside Track
Track Zone Ratio	6.58	1.18	1	1	1.18	6.58

