

2020.8.1~



Oil Pattern Distance:	44 Feet	Reverse Brush Drop:	44 Feet	Oil Per Board:	50 uL
Forward Oil Total:	16.35 mL	Reverse Oil Total:	10.05 mL	Volume Oil Total:	26.4 mL
Forward Boards Crossed:	327 Boards	Reverse Boards Crossed:	201 Boards	Total Boards Crossed:	528 Boards

	Start	Stop	Loads	Speed	Crossed	Start	End	Feet	T.Oil
1	3L	3R	1	10	35	0.0	0.0	0.0	1750
2	4L	4R	2	14	66	0.0	3.9	3.9	3300
3	8L	8R	3	18	75	3.9	11.5	7.6	3750
4	11L	11R	3	22	57	11.5	20.8	9.3	2850
5	12L	12R	3	22	51	20.8	30.1	9.3	2550
6	13L	13R	2	22	30	30.1	36.3	6.2	1500
7	14L	14R	1	26	13	36.3	39.9	3.6	650
8	2L	2R	0	30	0	39.9	44.0	4.1	0

Navigation: Forward Reverse More

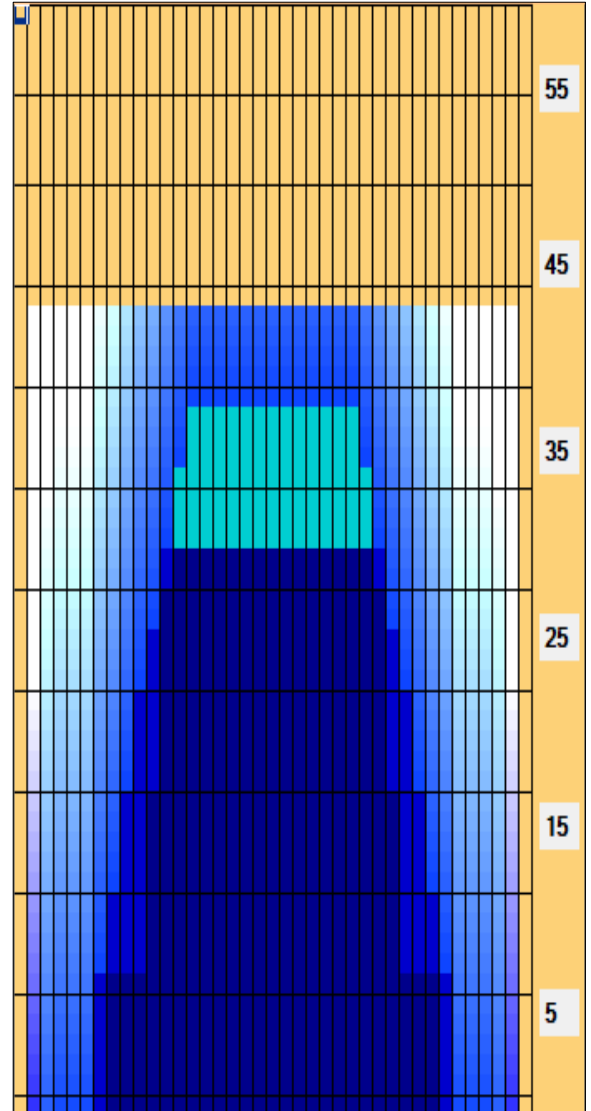
	Start	Stop	Loads	Speed	Crossed	Start	End	Feet	T.Oil
1	2L	2R	0	30	0	44.0	32.0	-12.0	0
2	12L	12R	1	26	17	32.0	28.4	-3.6	850
3	11L	11R	1	22	19	28.4	25.3	-3.1	950
4	10L	10R	2	18	42	25.3	20.2	-5.1	2100
5	9L	9R	2	18	46	20.2	15.1	-5.1	2300
6	8L	8R	2	14	50	15.1	11.2	-3.9	2500
7	7L	7R	1	14	27	11.2	9.3	-1.9	1350
8	2L	2R	0	14	0	9.3	4.0	-5.3	0
9	2L	2R	0	10	0	4.0	0.0	-4.0	0

Navigation: Forward Reverse More

Conditioner:
Type In or Select One

TransferType:
Type In or Select One

- Forward
- Reverse
- Combined
- Buff



Item Description	3L-7L:18L-18R Outside Track:Middle	8L-12L:18L-18R Middle Track:Middle	13L-17L:18L-18R Inside Track:Middle	18L-18R:17R-13R Middle: Inside Track	18L-18R:12R-8R Middle:Middle Track	18L-18R:7R-3R Middle:Outside Track
Track Zone Ratio	8.57	1.69	1.01	1.01	1.69	8.57

