

# 2021.4.1~



<b>Oil Pattern Distance:</b> 45 Feet	<b>Reverse Brush Drop:</b> 35 Feet	<b>Oil Per Board:</b> 50 uL
<b>Forward Oil Total:</b> 14.2 mL	<b>Reverse Oil Total:</b> 12.4 mL	<b>Volume Oil Total:</b> 26.6 mL
<b>Forward Boards Crossed:</b> 284 Boards	<b>Reverse Boards Crossed:</b> 248 Boards	<b>Total Boards Crossed:</b> 532 Boards

	Start	Stop	Loads	Speed	Crossed	Start	End	Feet	T.Oil
1	2L	2R	1	10	37	0.0	0.0	0.0	1850
2	5L	5R	2	18	62	0.0	5.1	5.1	3100
3	8L	8R	3	22	75	5.1	14.4	9.3	3750
4	9L	9R	2	22	46	14.4	20.6	6.2	2300
5	10L	10R	2	26	42	20.6	27.9	7.3	2100
6	15L	15R	2	26	22	27.9	35.2	7.3	1100
7	2L	2R	0	30	0	35.2	45.0	9.8	0

Navigation: Forward Reverse More

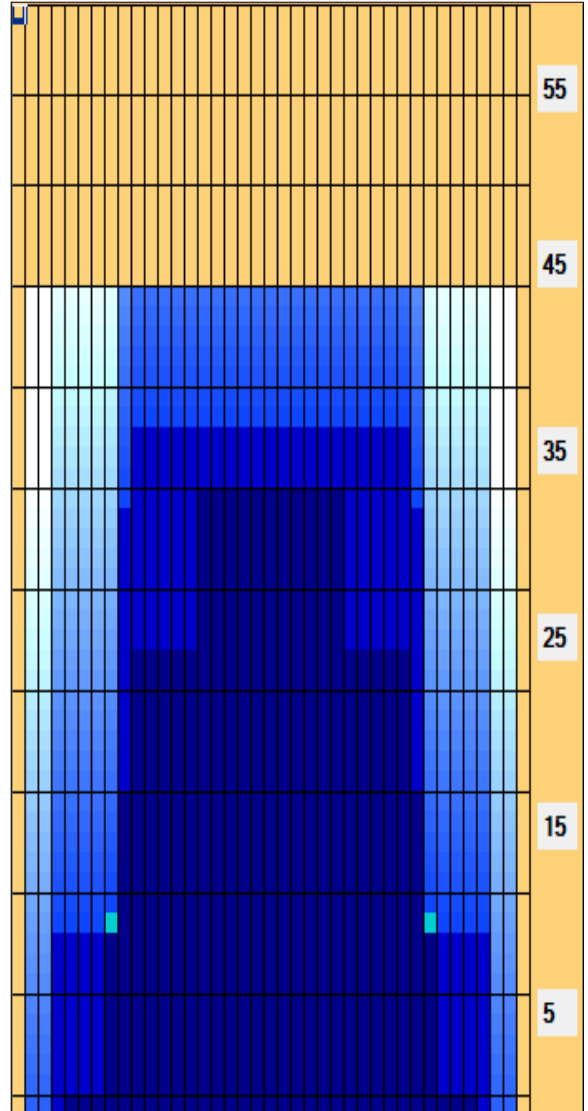
	Start	Stop	Loads	Speed	Crossed	Start	End	Feet	T.Oil
1	2L	2R	0	30	0	45.0	38.0	-7.0	0
2	10L	10R	1	26	21	38.0	34.4	-3.6	1050
3	9L	9R	2	26	46	34.4	27.1	-7.3	2300
4	9L	9R	3	22	69	27.1	17.8	-9.3	3450
5	9L	9R	2	18	46	17.8	12.7	-5.1	2300
6	4L	4R	2	14	66	12.7	8.8	-3.9	3300
7	2L	2R	0	14	0	8.8	4.0	-4.8	0
8	2L	2R	0	10	0	4.0	0.0	-4.0	0

Navigation: Forward Reverse More

Conditioner:  
Type In or Select One

TransferType:  
Type In or Select One

- Forward
- Reverse
- Combined
- Buff



Item Description	3L-7L:18L-18R Outside Track:Middle	8L-12L:18L-18R Middle Track:Middle	13L-17L:18L-18R Inside Track:Middle	18L-18R:17R-13R Middle: Inside Track	18L-18R:12R-8R Middle:Middle Track	18L-18R:7R-3R Middle:Outside Track
Track Zone Ratio	5.79	1.29	1.04	1.04	1.29	5.79

