

2022.12.1~



Oil Pattern Distance:	47 Feet	Reverse Brush Drop:	42 Feet	Oil Per Board:	45 uL
Forward Oil Total:	12.915 mL	Reverse Oil Total:	10.575 mL	Volume Oil Total:	23.49 mL
Forward Boards Crossed:	287 Boards	Reverse Boards Crossed:	235 Boards	Total Boards Crossed:	522 Boards

	Start	Stop	Loads	Speed	Crossed	Start	End	Feet	T.Oil
1	2L	2R	2	10	74	0.0	1.4	1.4	3330
2	4L	4R	2	10	66	1.4	4.2	2.8	2970
3	7L	7R	1	10	27	4.2	5.6	1.4	1215
4	10L	10R	3	10	63	5.6	9.8	4.2	2835
5	11L	11R	3	14	57	9.8	15.7	5.9	2565
6	2L	2R	0	18	0	15.7	24.0	8.3	0
7	2L	2R	0	22	0	24.0	33.0	9.0	0
8	2L	2R	0	30	0	33.0	47.0	14.0	0

Navigation: Forward Reverse More

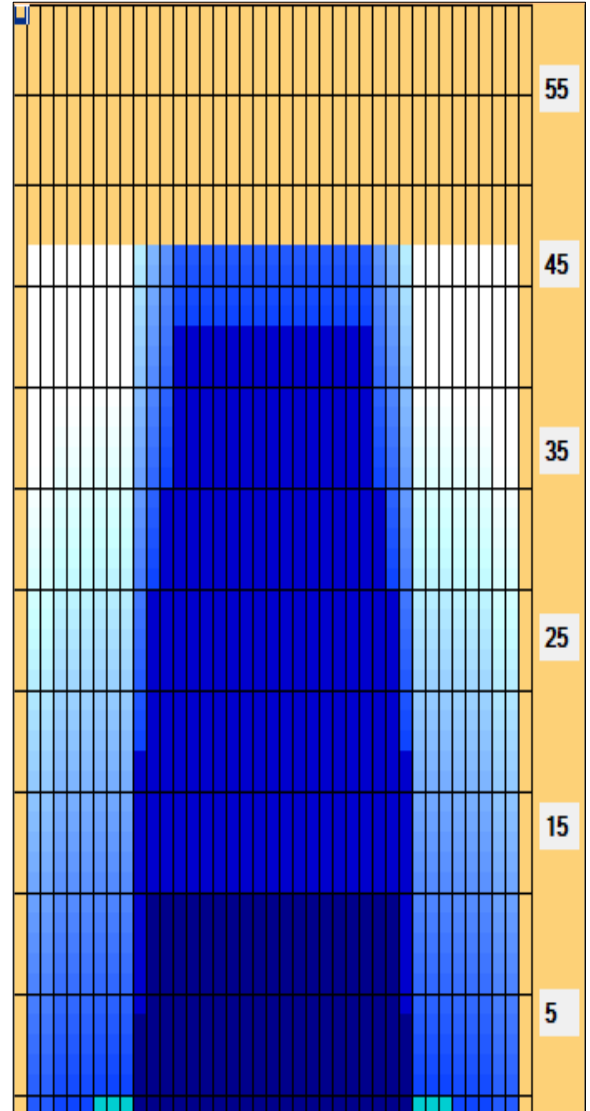
	Start	Stop	Loads	Speed	Crossed	Start	End	Feet	T.Oil
1	2L	2R	0	30	0	47.0	43.0	-4.0	0
2	13L	13R	3	18	45	43.0	35.4	-7.6	2025
3	12L	12R	3	14	51	35.4	29.5	-5.9	2295
4	11L	11R	4	14	76	29.5	21.6	-7.9	3420
5	10L	10R	3	10	63	21.6	17.4	-4.2	2835
6	2L	2R	0	10	0	17.4	0.0	-17.4	0

Navigation: Forward Reverse More

Conditioner:
Type In or Select One

TransferType:
Type In or Select One

- Forward
- Reverse
- Combined
- Buff



TRANSFER BRUSH SYSTEM Program #2

Item Description	3L-7L:18L-18R Outside Track:Middle	8L-12L:18L-18R Middle Track:Middle	13L-17L:18L-18R Inside Track:Middle	18L-18R:17R-13R Middle: Inside Track	18L-18R:12R-8R Middle:Middle Track	18L-18R:7R-3R Middle:Outside Track
Track Zone Ratio	6.32	2	1	1	2	6.32

