

2022.8.1 ~



Oil Pattern Distance:	39 Feet	Reverse Brush Drop:	38 Feet	Oil Per Board:	45 uL
Forward Oil Total:	12.78 mL	Reverse Oil Total:	11.16 mL	Volume Oil Total:	23.94 mL
Forward Boards Crossed:	284 Boards	Reverse Boards Crossed:	248 Boards	Total Boards Crossed:	532 Boards

	Start	Stop	Loads	Speed	Crossed	Start	End	Feet	T.Oil
1	3L	3R	3	14	105	0.0	3.9	3.9	4725
2	5L	5R	2	14	62	3.9	7.8	3.9	2790
3	8L	8R	3	18	75	7.8	15.4	7.6	3375
4	10L	10R	2	22	42	15.4	21.6	6.2	1890
5	2L	2R	0	26	0	21.6	39.0	17.4	0

Navigation: Forward Reverse More

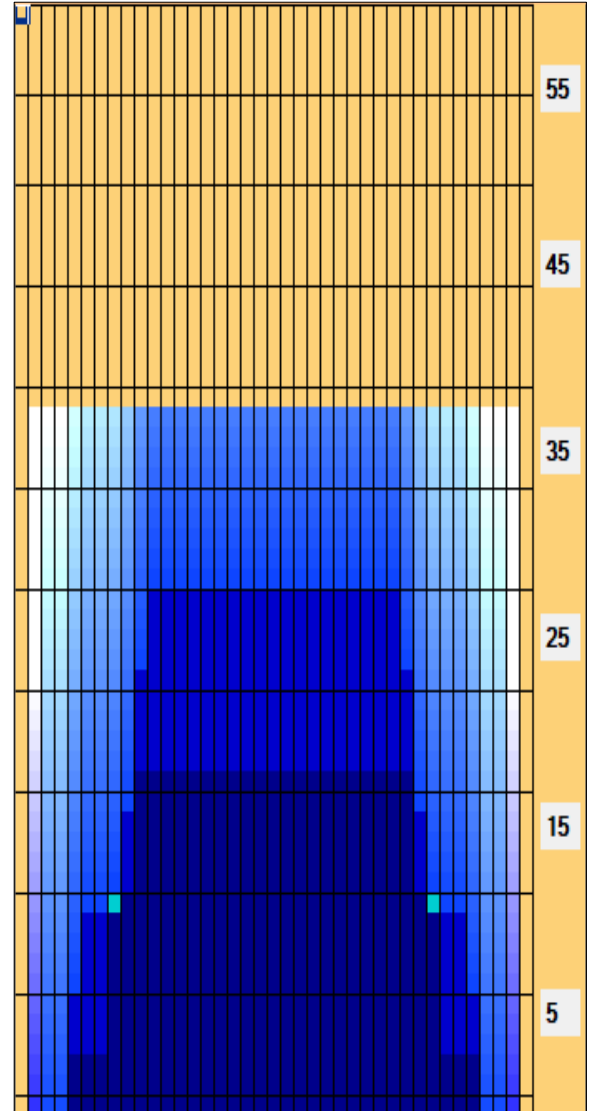
	Start	Stop	Loads	Speed	Crossed	Start	End	Feet	T.Oil
1	2L	2R	0	26	0	39.0	30.0	-9.0	0
2	11L	11R	1	26	19	30.0	26.4	-3.6	855
3	10L	10R	3	18	63	26.4	18.8	-7.6	2835
4	9L	9R	2	18	46	18.8	13.7	-5.1	2070
5	6L	6R	2	14	58	13.7	9.8	-3.9	2610
6	5L	5R	2	14	62	9.8	5.9	-3.9	2790
7	2L	2R	0	10	0	5.9	0.0	-5.9	0

Navigation: Forward Reverse More

Conditioner:
Type In or Select One

TransferType:
Type In or Select One

- Forward
- Reverse
- Combined
- Buff



Item Description	3L-7L:18L-18R Outside Track:Middle	8L-12L:18L-18R Middle Track:Middle	13L-17L:18L-18R Inside Track:Middle	18L-18R:17R-13R Middle: Inside Track	18L-18R:12R-8R Middle:Middle Track	18L-18R:7R-3R Middle:Outside Track
Track Zone Ratio	3.23	1.18	1	1	1.18	3.23

