

# 2023.4 ~



<b>Oil Pattern Distance:</b> 42 Feet	<b>Reverse Brush Drop:</b> 40 Feet	<b>Oil Per Board:</b> 50 uL
<b>Forward Oil Total:</b> 11.5 mL	<b>Reverse Oil Total:</b> 11.05 mL	<b>Volume Oil Total:</b> 22.55 mL
<b>Forward Boards Crossed:</b> 230 Boards	<b>Reverse Boards Crossed:</b> 221 Boards	<b>Total Boards Crossed:</b> 451 Boards

	Start	Stop	Loads	Speed	Crossed	Start	End	Feet	T.Oil
1	3L	3R	1	10	35	0.0	0.0	0.0	1750
2	5L	5R	1	14	31	0.0	1.9	1.9	1550
3	7L	7R	1	18	27	1.9	4.4	2.5	1350
4	10L	10R	3	18	63	4.4	12.0	7.6	3150
5	11L	11R	3	22	57	12.0	21.3	9.3	2850
6	12L	12R	1	22	17	21.3	24.4	3.1	850
7	2L	2R	0	30	0	24.4	42.0	17.6	0

Navigation: Forward Reverse More

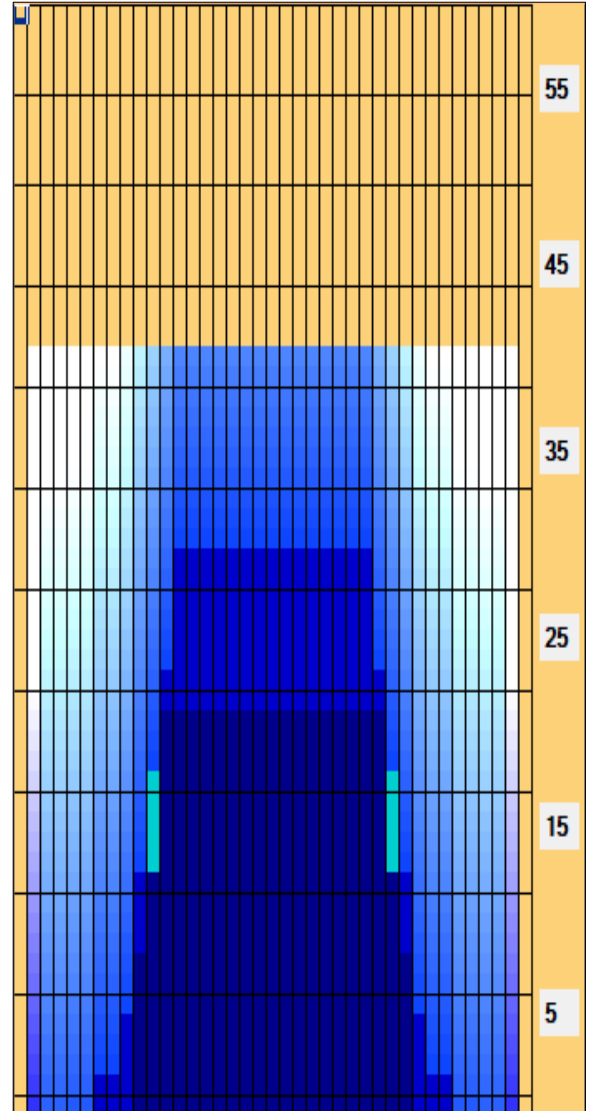
	Start	Stop	Loads	Speed	Crossed	Start	End	Feet	T.Oil
1	2L	2R	0	26	0	42.0	32.0	-10.0	0
2	13L	13R	2	22	30	32.0	25.8	-6.2	1500
3	12L	12R	3	22	51	25.8	16.5	-9.3	2550
4	10L	10R	3	18	63	16.5	8.9	-7.6	3150
5	9L	9R	1	18	23	8.9	6.4	-2.5	1150
6	7L	7R	2	14	54	6.4	2.5	-3.9	2700
7	2L	2R	0	14	0	2.5	0.0	-2.5	0

Navigation: Forward Reverse More

Conditioner:  
Type In or Select One

TransferType:  
Type In or Select One

- Forward
- Reverse
- Combined
- Buff



Item Description	3L-7L:18L-18R Outside Track:Middle	8L-12L:18L-18R Middle Track:Middle	13L-17L:18L-18R Inside Track:Middle	18L-18R:17R-13R Middle: Inside Track	18L-18R:12R-8R Middle:Middle Track	18L-18R:7R-3R Middle:Outside Track
Track Zone Ratio	9.55	1.84	1	1	1.84	9.55

